



Cable Glands

Sealing Glands



PG & Metric Holes | EPDM | Chloroprene | TSS | IP67 Rating

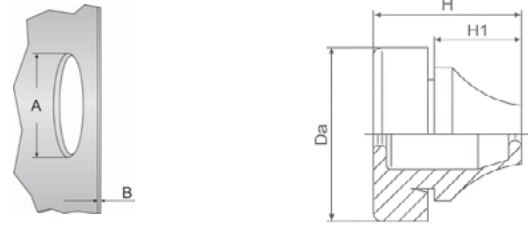
PG Holes								
Gray EPDM	Black Chloroprene	Size	Diameter Range (mm)	A Mounting Hole Clearance (mm)	B Panel Thickness Range (mm)	Da (mm)	H (mm)	H1 (mm)
SG-PG07-EGY	SG-PG07-CBK	PG 7	3 - 5	13	0.5 - 2	20	12.6	5.4
SG-PG09-EGY	SG-PG09-CBK	PG 9	5 - 7	16	1 - 4	21	17.8	10.3
SG-PG11-EGY	SG-PG11-CBK	PG 11	7 - 10	19	1 - 4	24	19.8	12.7
SG-PG16-EGY	SG-PG16-CBK	PG 16	10 - 14	23	1 - 4	28	21.6	14.7
SG-PG21-EGY	SG-PG21-CBK	PG 21	14 - 20	29	1 - 4	35	24.6	17.6
SG-PG29-EGY	SG-PG29-CBK	PG 29	20 - 26	38	1 - 4	46	28.5	20.0
SG-PG36-EGY	SG-PG36-CBK	PG 36	26 - 35	48	1 - 4	58	34.9	23.9
Metric Holes								
SG-M12-EGY	SG-M12-CBK	M12	4 - 7	12.5	0.5 - 2	20	12.8	5.6
SG-M16-EGY	SG-M16-CBK	M16	5 - 9	16.5	1 - 4	21	17.7	11.0
SG-M20-EGY	SG-M20-CBK	M20	8 - 13	20.5	1 - 4	25.5	20.0	13.4
SG-M25-EGY	SG-M25-CBK	M25	11 - 17	25.5	1 - 4	30.5	21.3	15.3
SG-M32-EGY	SG-M32-CBK	M32	15 - 20	32.5	1 - 4	38.5	24.6	18.6
SG-M40-EGY	SG-M40-CBK	M40	19 - 28	40.5	1 - 4	48.5	29.5	21.7
SG-M50-EGY	SG-M50-CBK	M50	27 - 35	50.5	1 - 4	60.5	34.8	25.0

For volume use, black or light gray glands are available. Please consult the factory for part numbers and availability.

Specifications:

Body: EPDM
 Temperature: -40°C to +110°C (-40° to +230°F)
 Protection: IP67

Body: Chloroprene
 Temperature: -40°C to +100°C (-22° to +212°F)
 Protection: IP67



Cable Glands & Adapters

U

TSS Metric										
Part Number	Color	Size	Diameter Range (mm)	A Mounting Hole Clearance (mm)	B Panel Thickness Range (mm)	H (mm)	H1 (mm)	H2 (mm)	D (mm)	D1 (mm)
SGC-M16-TGY	Gray	M16	5 - 10	16.5	0.5 - 3.0	11	4	6.75	23.5	4
SGC-M20-TGY	Gray	M20	6 - 13	20.5	0.5 - 3.0	11	4	6.75	27.5	5
SGC-M25-TGY	Gray	M25	8 - 17	25.5	0.5 - 3.5	11	4	6.75	32.5	7
SGC-M32-TGY	Gray	M32	12 - 24	32.5	0.5 - 4.5	11	4	6.75	39.5	11

Specifications:

Body: TPE (Thermoplastic Elastomer)
 Temperature: -50°C to +125°C (-58° to +257°F)
 Protection: IP67

